

SABA HÂNLİSİ

SOLO
PES HE NAN OL DU SÜ VAR OL PAK(L) ZÂT

KORO **SOLO**
SAL LÜ A LEYH NÂ REİ SÂ BÂ Sİ LE DOL DU Cİ

HAT **(HAT)**

KORO **SOLO**
SALLÜ A LEYH BİR Rİ KÂBİN DAYÜ RÜR CİB Rİ Lİ E MİN

KORO **SOLO**
(MİN) SAL LÜ A LEYH Bİ Rİ

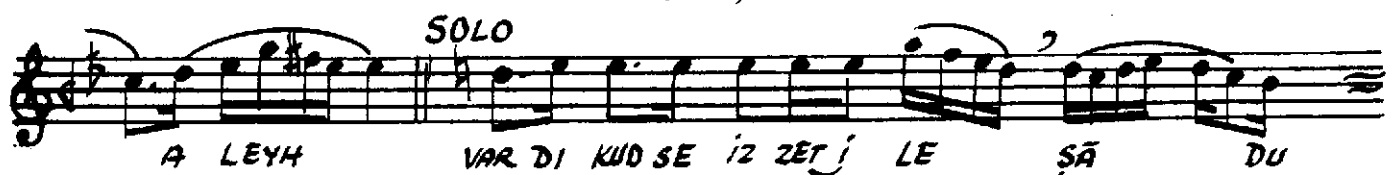
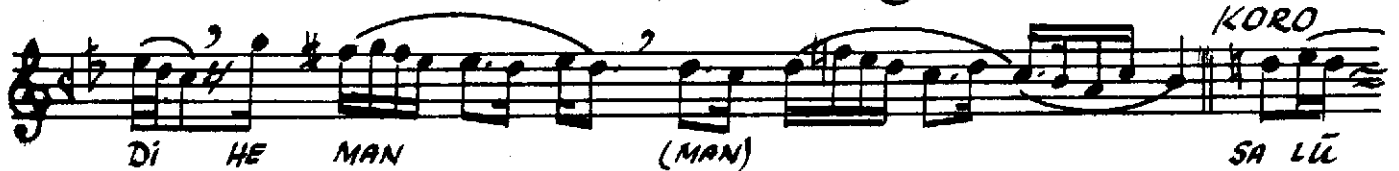
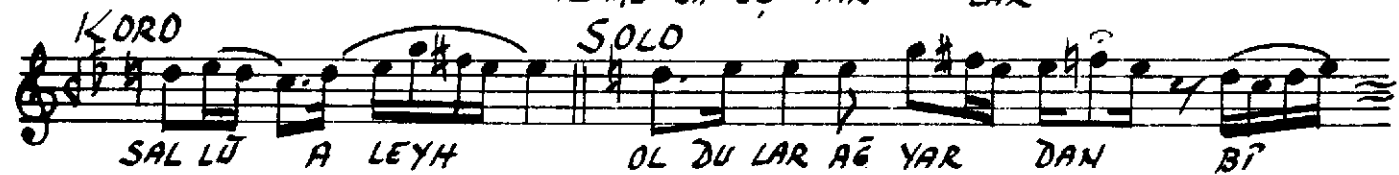
SOLO
Mİ KÂ İL İ LE OL DU BE RİN (RİN)

(RİN) **(RİN)**

KORO **SOLO**
SALLÜ A LEYH Nİ CE GEZ

KORO
YÜZ BİN ME LÂ İK GEL Dİ LER SAL LÜ A

SOLO
LEYH EM Rİ HAK LA A'NA DEV REV OL DU LAR





(MİN) KORO SALLŪ A LEYH SOLO NUR DAN Mİ' RĀ HĀ ZİR

KİL Dİ LAR (LAR)

KORO SALLŪ A LEYH SOLO İZ ZET İ LE OL A RA YA

GEL Dİ LER KORO SALLŪ A LEYH

BİR TA BAK LA GEL Dİ ÜÇ KÂ SEĀ NĀ (NĀ)

KORO SALLŪ A LEYH SOLO Bİ Rİ HAM RŪ Bİ Rİ SŪT Bİ Rİ S MĀ

(MĀ) (MĀ) (MĀ)

(MĀ) KORO SALLŪ A LEYH

DE Dİ CİB RİL EY LE Bİ RİN İHTİ YĀR

(YĀR) KORO SALLŪ A LEYH SOLO BÖY LE

